

# Portfolio



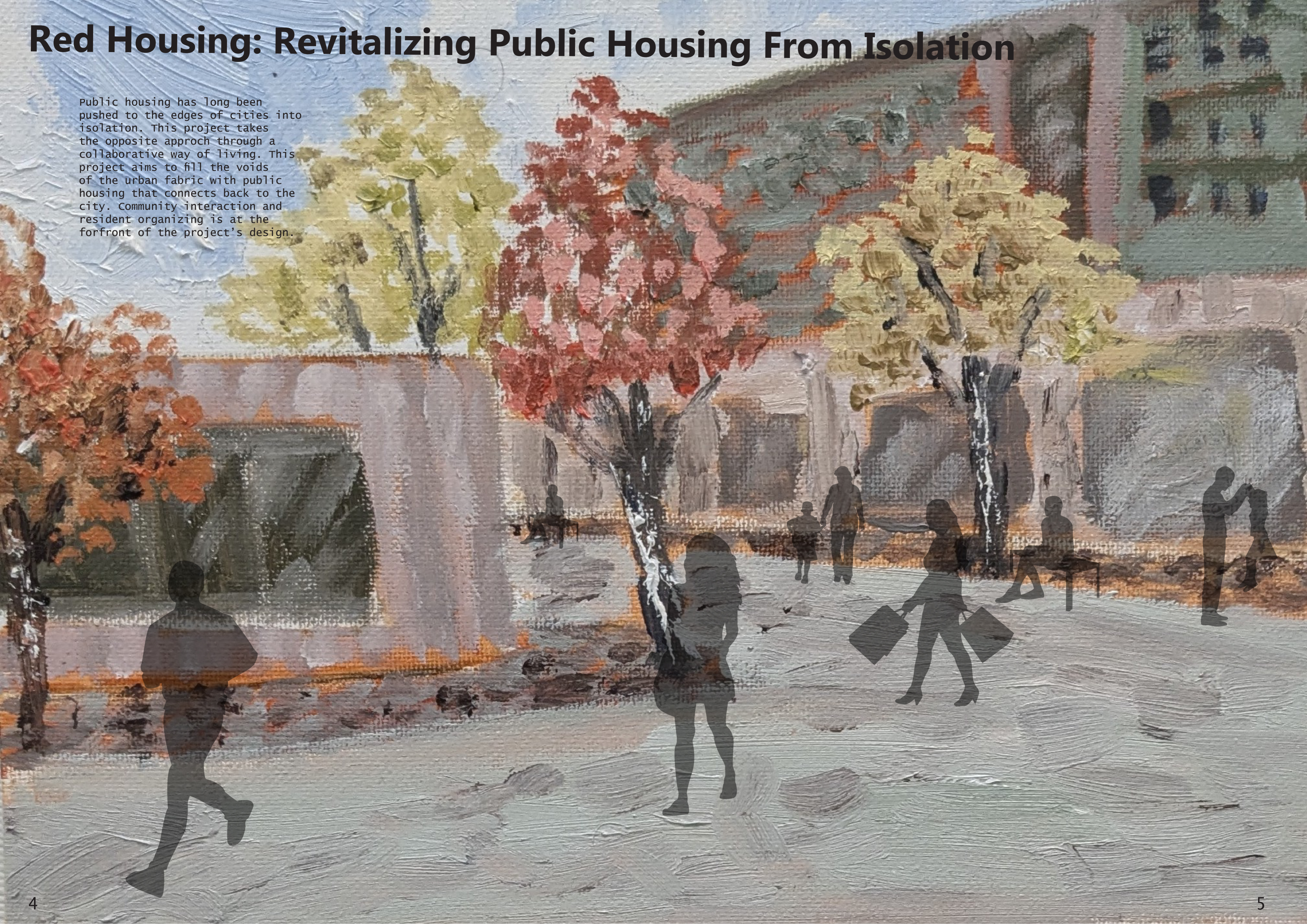
christian garcia | 2025

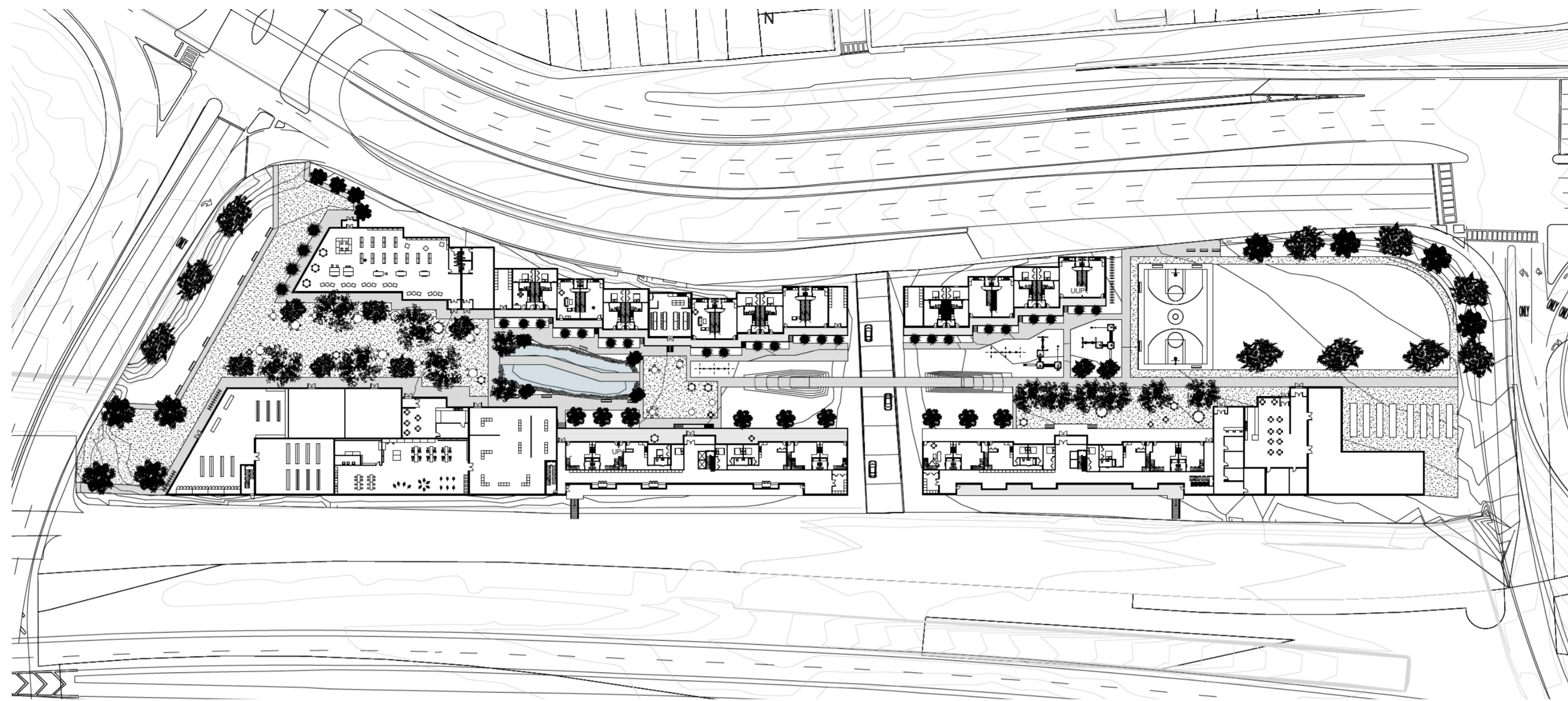
# Contents

|      |   |    |
|------|---|----|
| 2025 | Red Housing: Revitalizing Public Housing from Isolation | 4  |
| 2024 | Floral Heights  | 12 |
| 2023 | Public Housing in Holyoke                               | 20 |
| 2023 | Halibit Spirtual Center                                 | 26 |
| 2022 | O-Hill Viewing Platform                                 | 32 |
| 2025 | Metal Building Rec Center                               | 34 |
| 2022 | Kiki's House  | 40 |
| 2023 | Flower Room   | 42 |

# Red Housing: Revitalizing Public Housing From Isolation

Public housing has long been pushed to the edges of cities into isolation. This project takes the opposite approach through a collaborative way of living. This project aims to fill the voids of the urban fabric with public housing that connects back to the city. Community interaction and resident organizing is at the forefront of the project's design.





Public Focused Program

Resident Focused Program

Public Focused Program

## The Greenway

### Main Plaza

The western side of the greenway is where the main plaza is located. The main plaza is populated with Honey Locust and Ginkgo trees, which have big canopies to shade the plaza. The plaza also has movable tables and chairs for a more flexible layout. The public program surrounding the plaza are all high-capacity spaces such as the grocery store, public library, and retail spaces.

### Water Collecting Pond

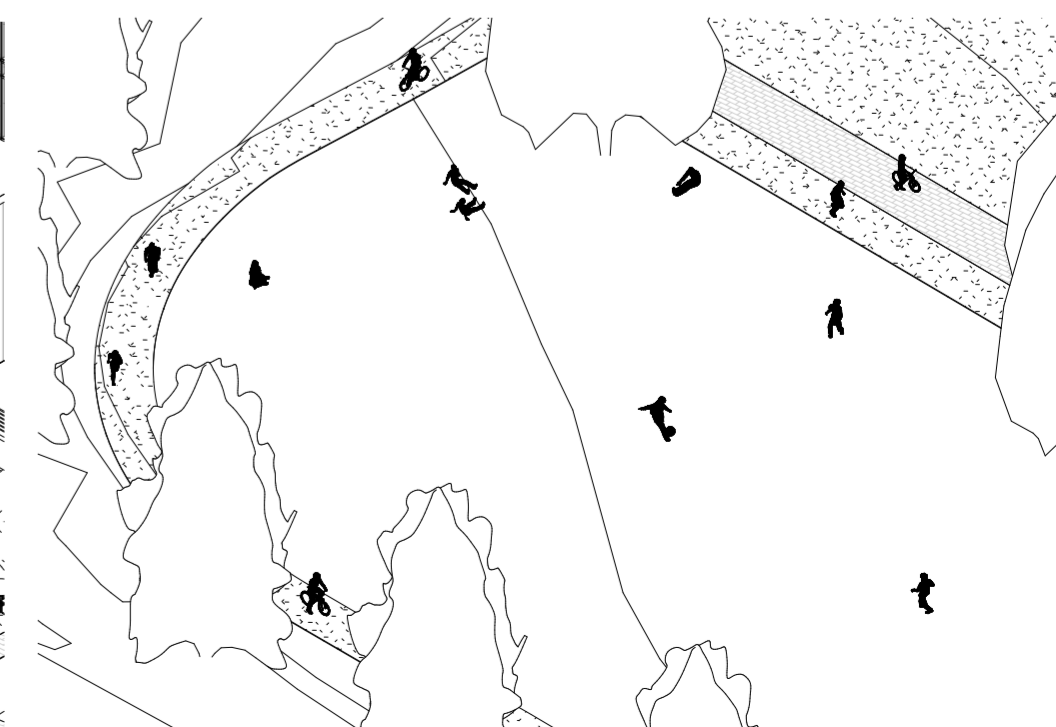
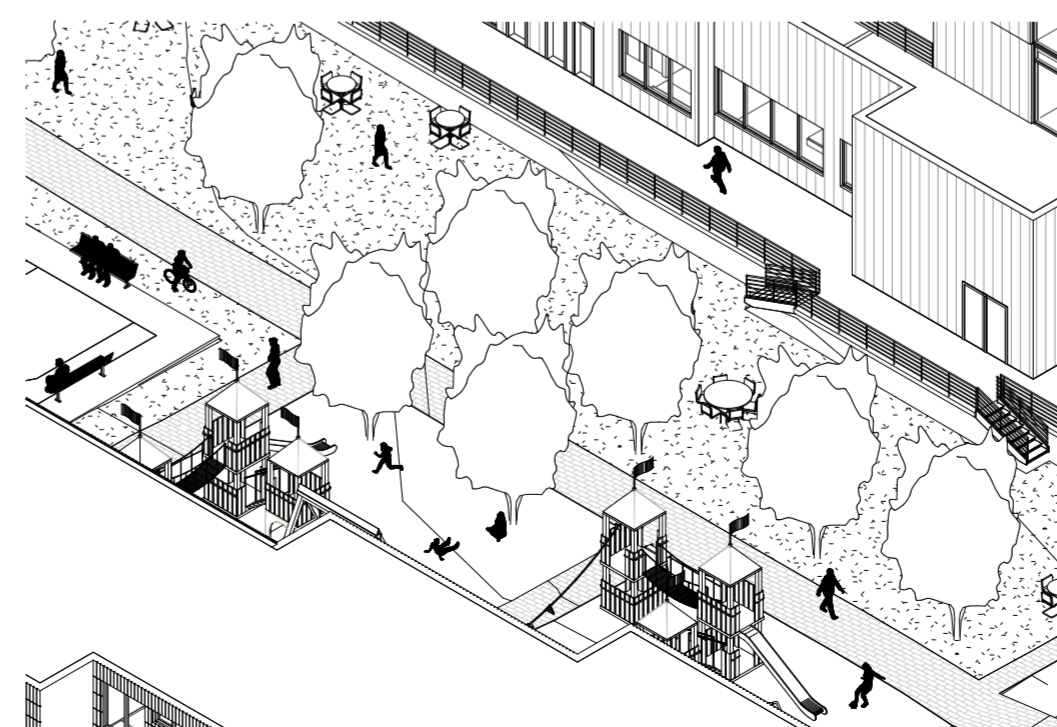
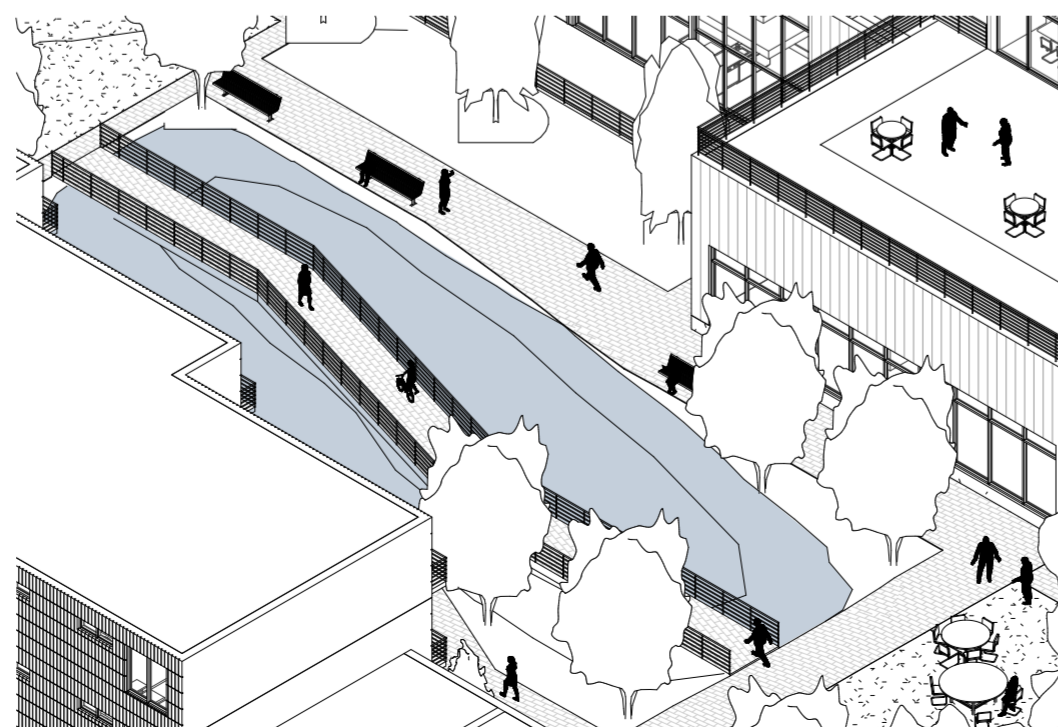
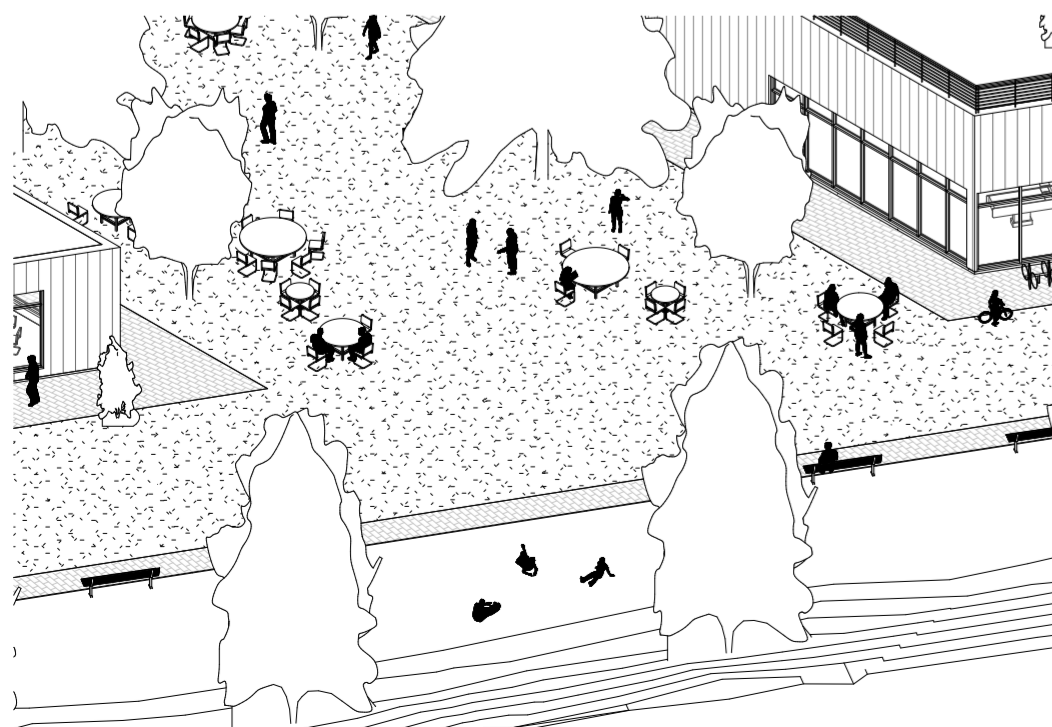
The water collecting pond is located between the main plaza and a resident plaza. It serves to be a natural filter between the two plazas. The pond also helps prevent flooding as a part of the site is in a flood zone while also combating the heat island effect.

### Resident Plaza

The center of greenway serves primarily the residents with a plaza that connects Buildings 1 and 4 together and Buildings 2, 3 together. The resident plazas make the core of the site more like a neighborhood. Also having the plaza near the playground means that parents can keep an eye on their children while sitting out on the plaza interacting with other parents.

### Athletic Field and Running track

On the Eastern side of the greenway is the athletic field and running track. Similar to the main plaza this space is meant to be occupied by large amounts of people. This is a large green space for the public and residents to interact with.



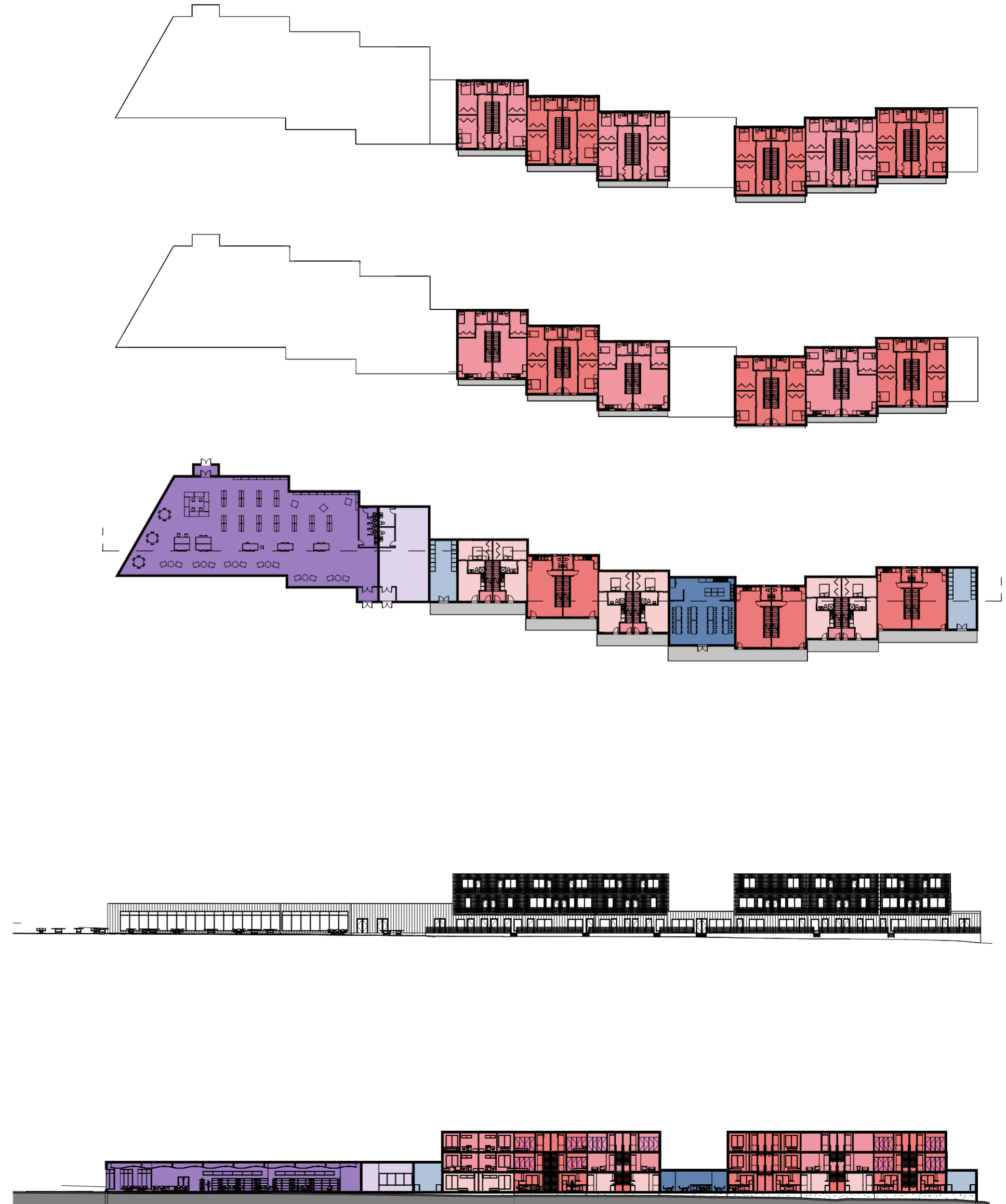
- STUDIO
- 2-BED
- 3-BED
- 4-BED
- 6-BED SHARED
- SHARED DINNING
- REC ROOM
- GYM
- LAUNDRY
- FLEX SPACE
- GROCERY STORE
- ARTIST WORKSHOP /GALLERY
- CAFE
- RETAIL

Building 4



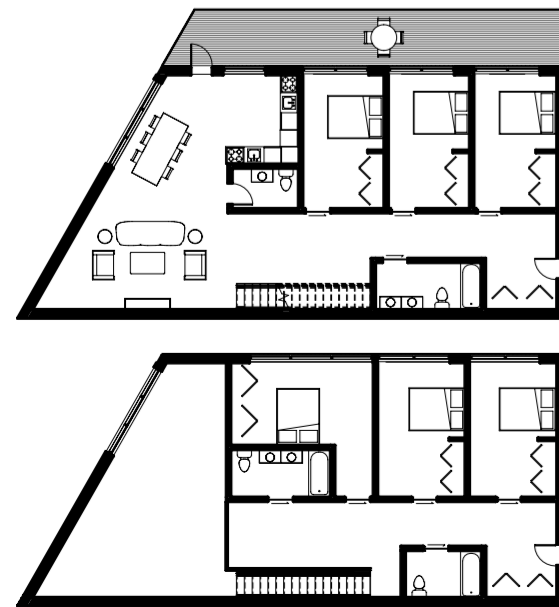
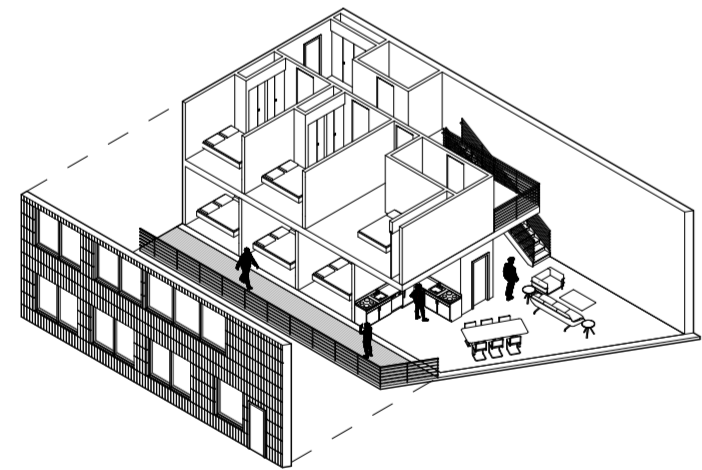
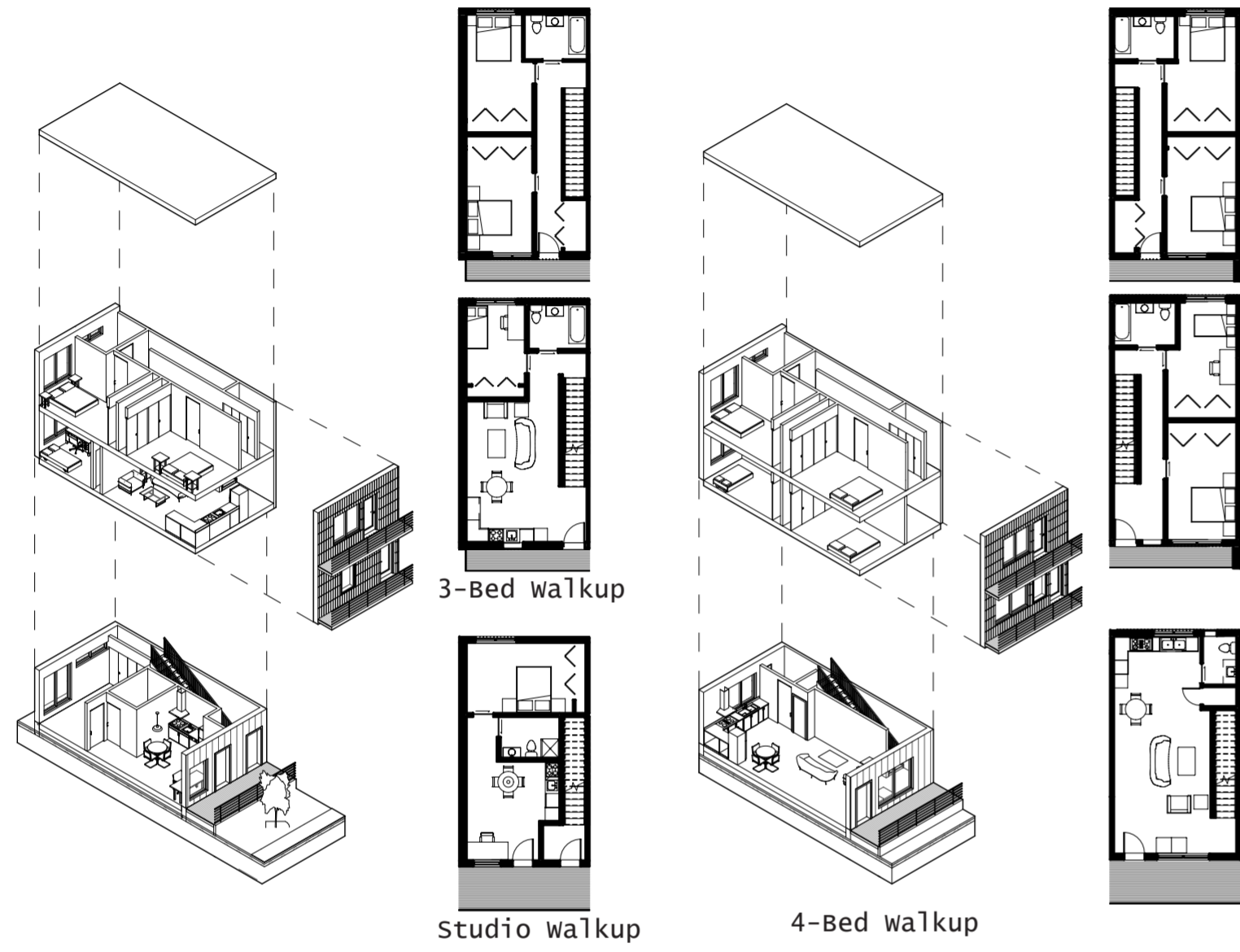
- STUDIO
- 3-BED
- 4-BED
- SHARED DINNING
- LAUNDRY
- LIBRARY
- DAYCARE

Building 1

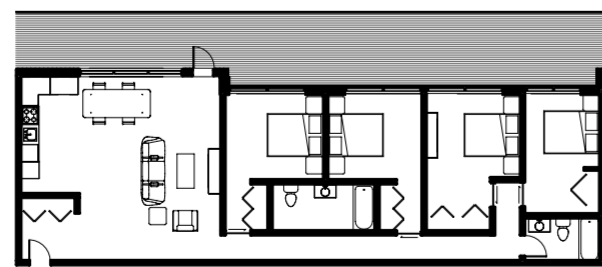
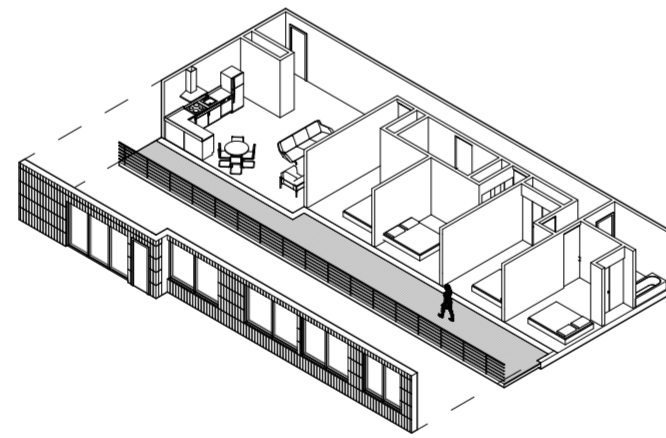


## Unit Types

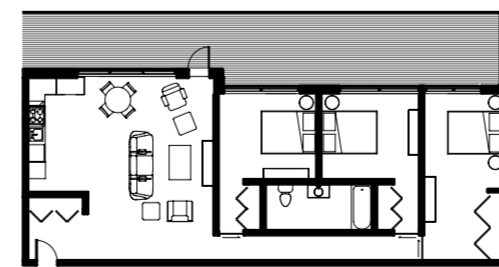
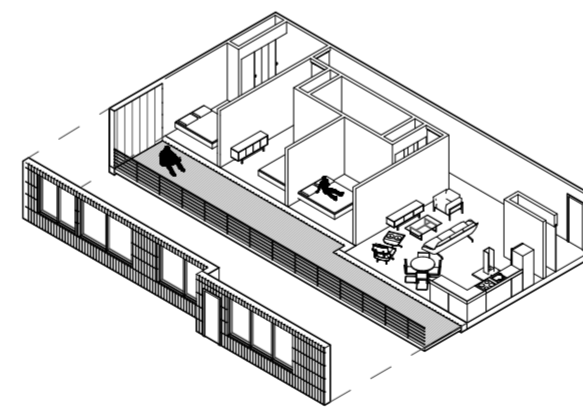
The residential units have a diverse mix to accommodate a multitude of different types of families. The unit types offered in the project range from studios, 2-beds, 3-beds, 4-beds, and 6-bed shared apartments. This diversity can help with dealing with changing demographics or family structures.



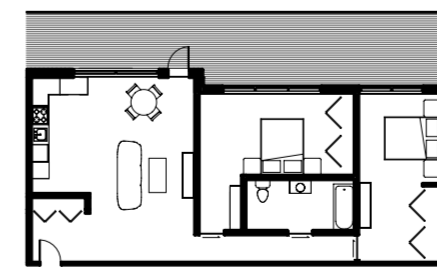
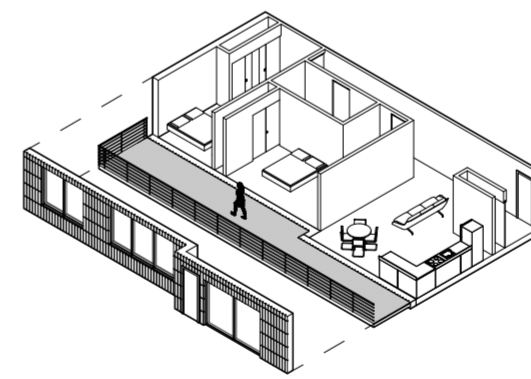
6-Bed Shared



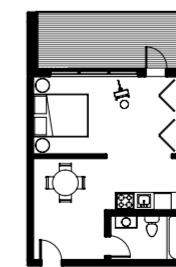
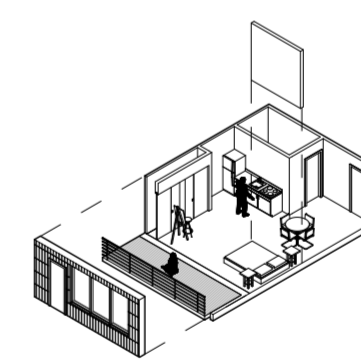
4-Bed



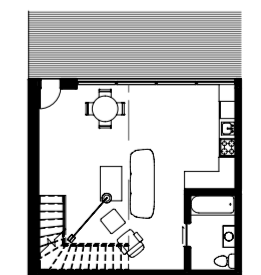
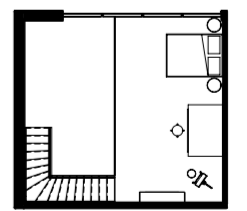
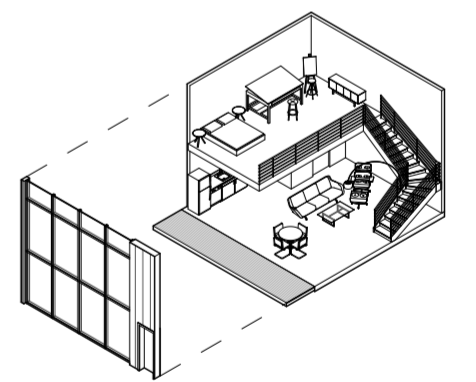
3-Bed



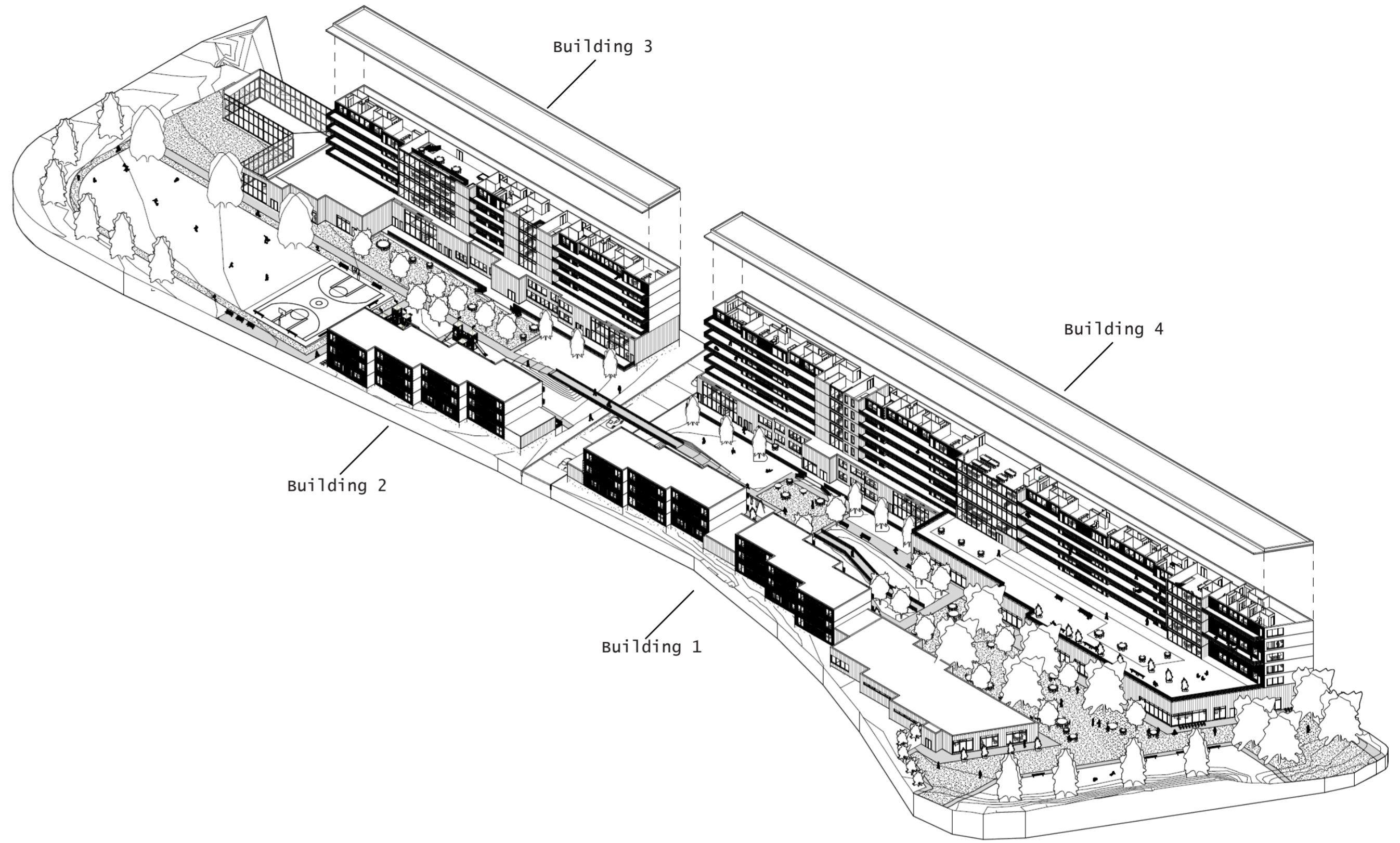
2-Bed



Studio



Studio Loft



# Floral Heights

where nature and commerce converge. A modern urban retreat inspired by azalea blooms and chinese money plants, offering a seamless blend of retail, research, and innovation in the heart of Los Angeles.





Lab Roof  
90'-0"

Level 6 - Lab  
76'-0"

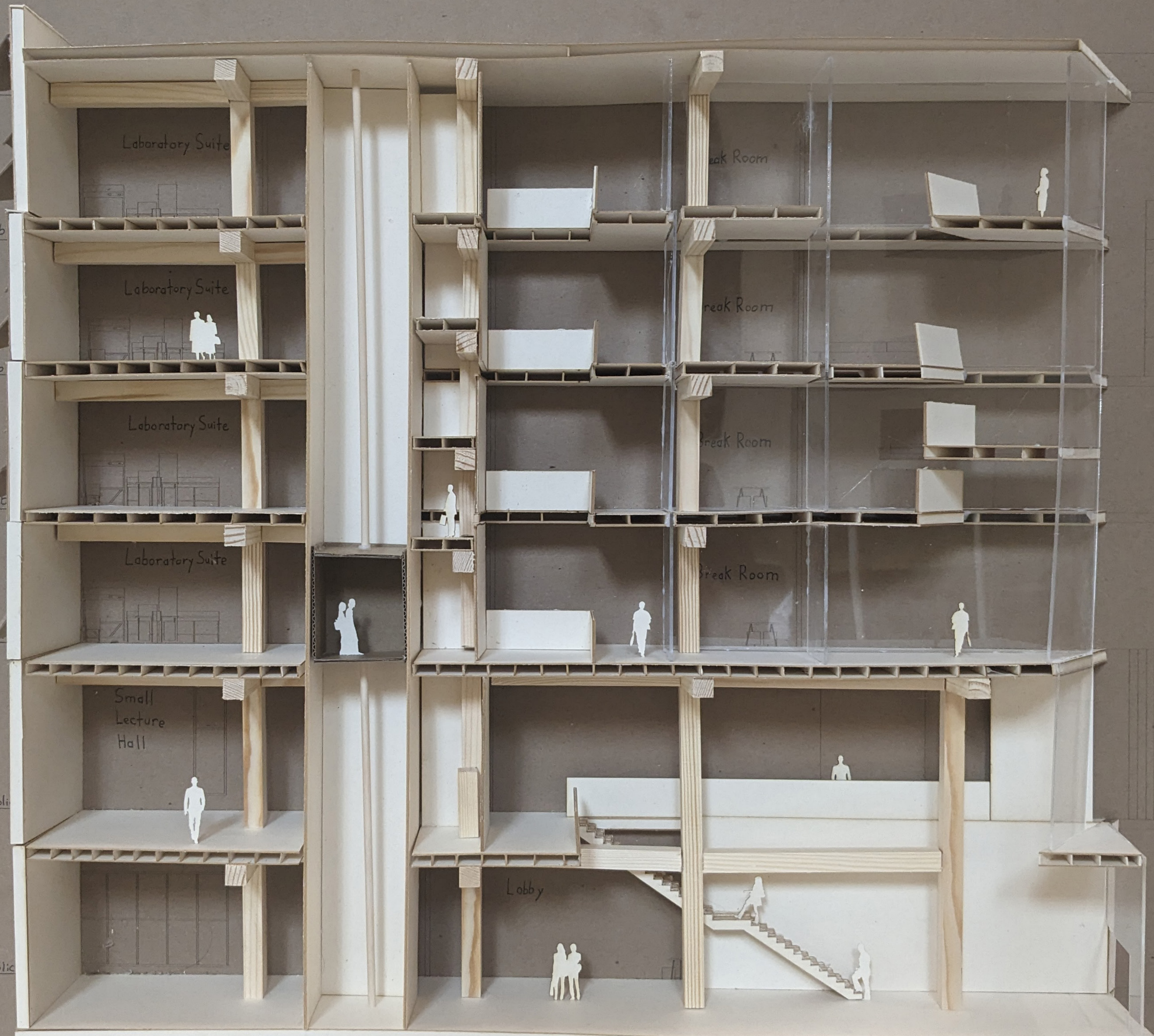
Level 5 - Lab  
62'-0"

Level 4 - Lab  
44'-0"

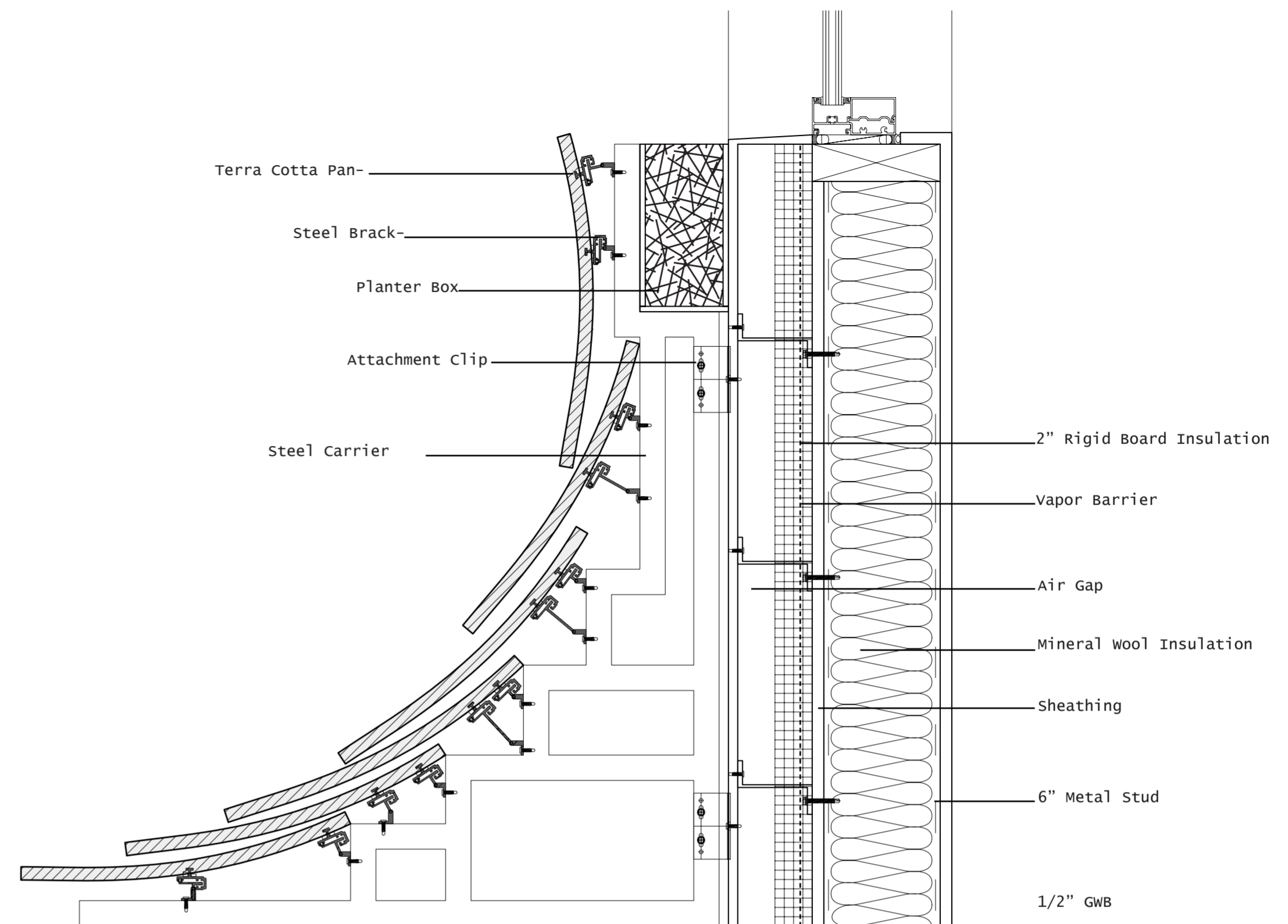
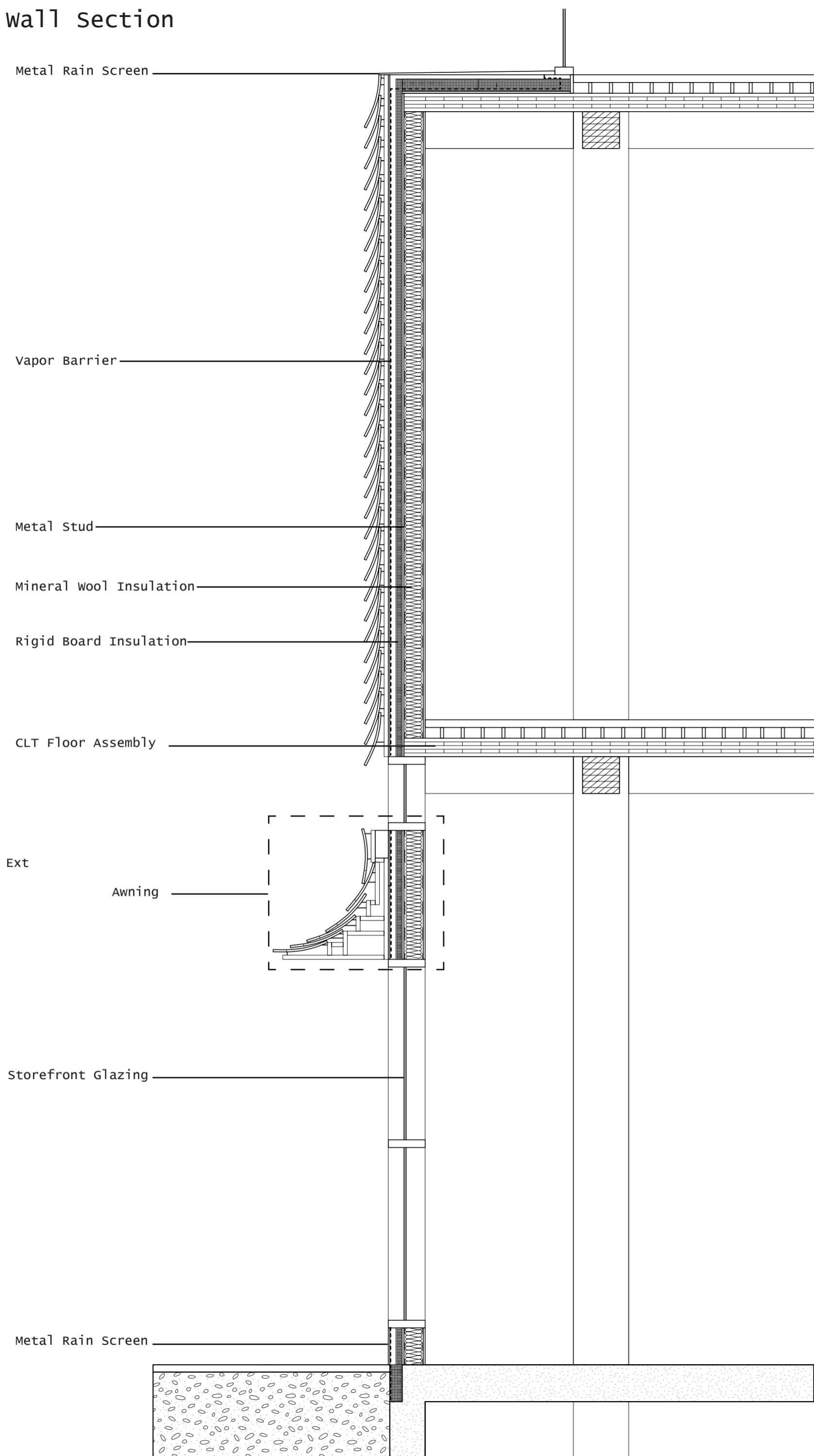
Level 3 - Lab  
34'-0"

Level 2 - Public  
17'-0"

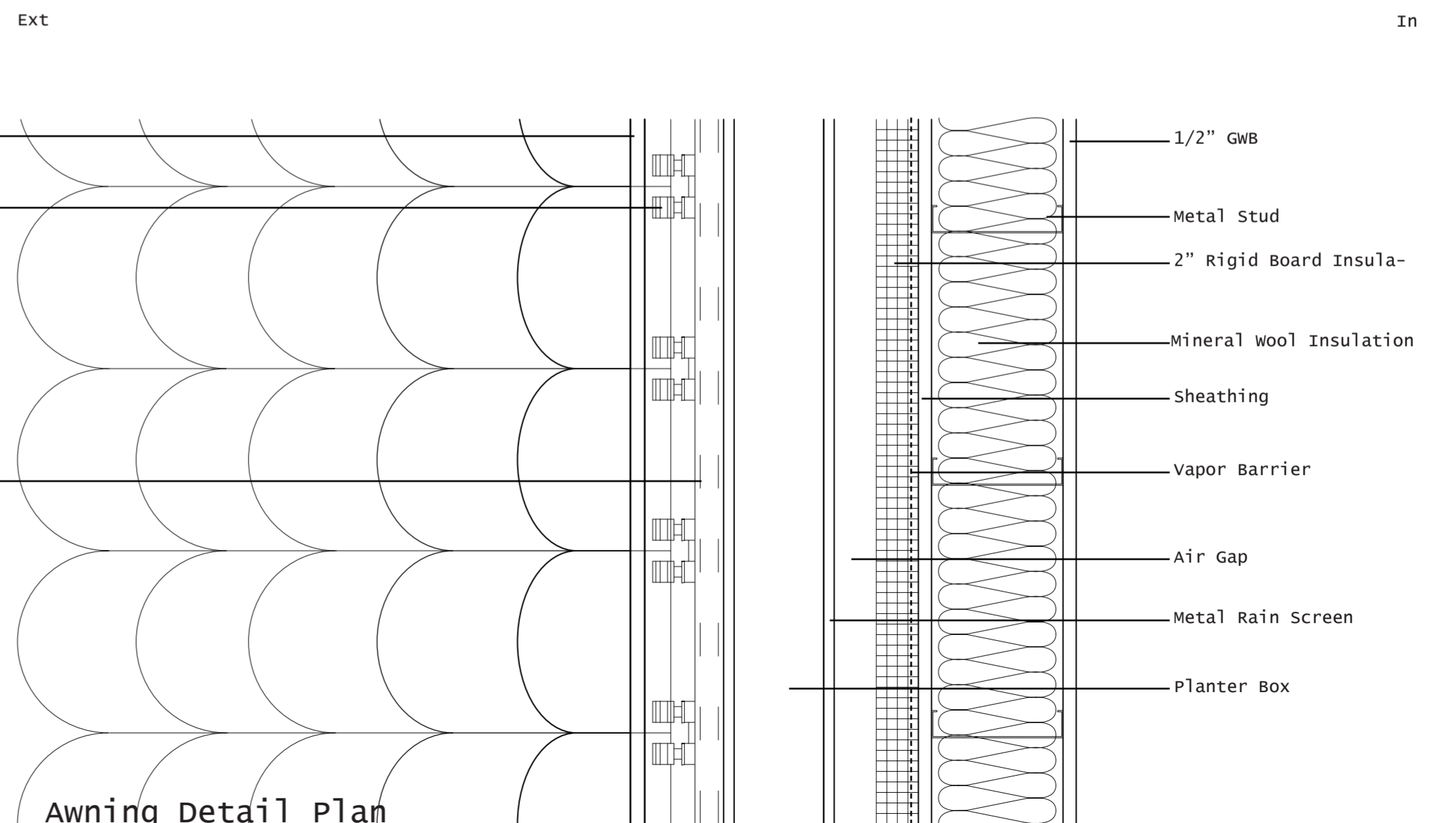
Level 1 - Public  
0'-0"



# wall section



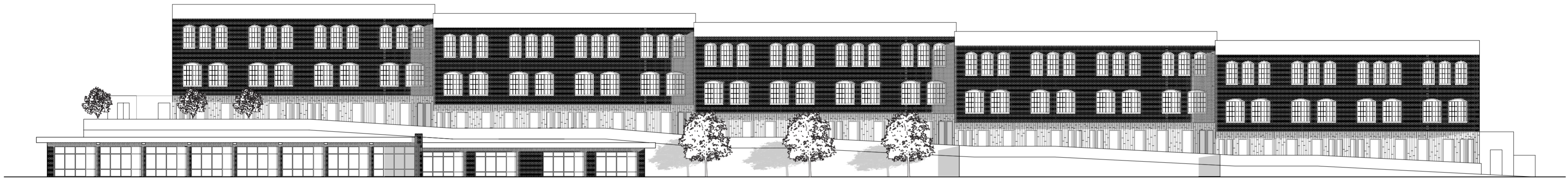
# Awning Detail Section



# Awning Detail Plan

# Holyoke Public Housing

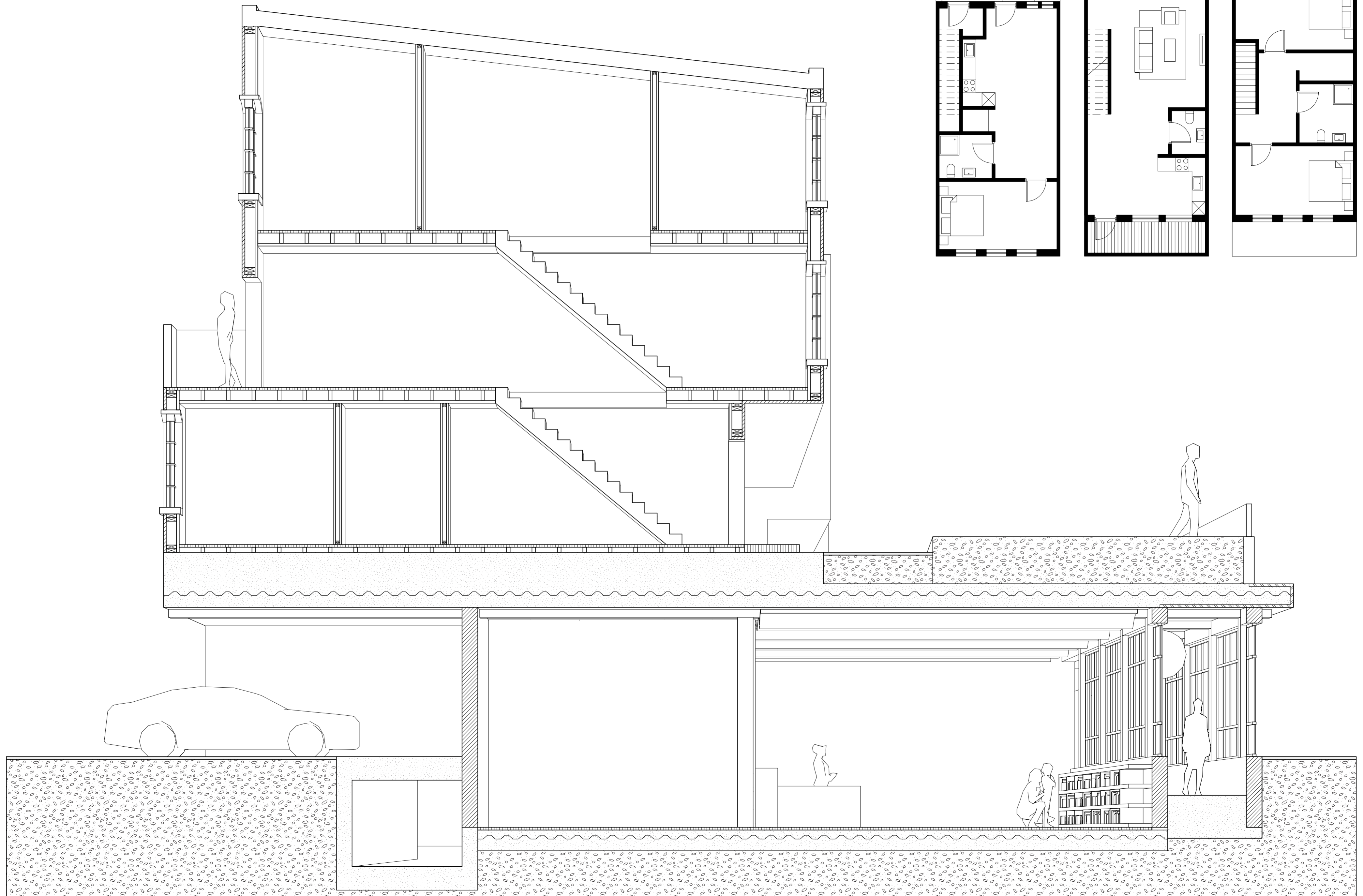
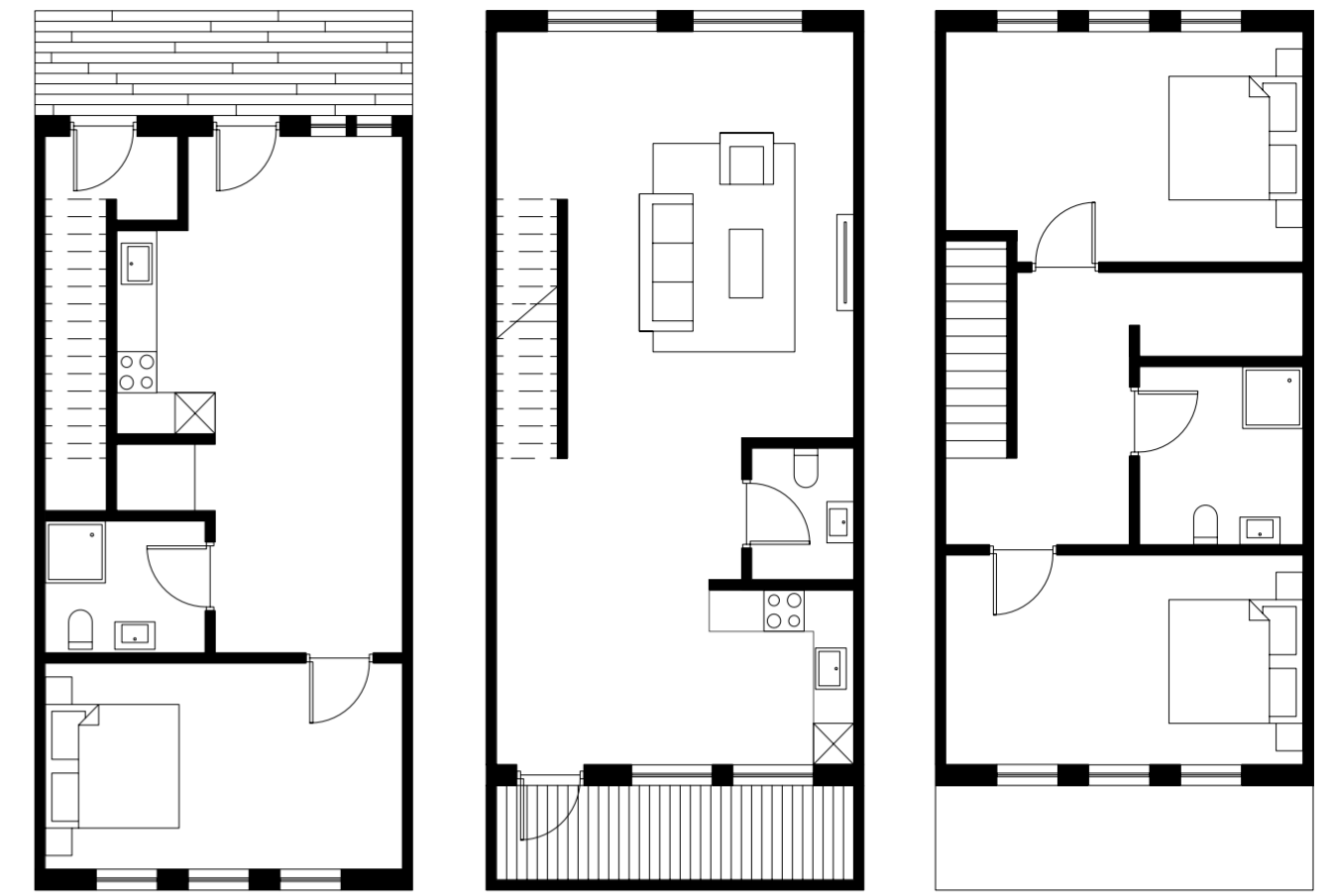
This affordable housing project is located in The Flats neighborhood in Holyoke. This project consists of 40 total units with an even split of one and two bedroom units. The project has a stepping design to maximize green space while still having space for a public library and office space.



Public Library    1-Bed walkup    2-Bed walkup

One Bed

Two Bed



# Halibit Point Spiritual Center

The concept for this project is to create a design that evokes the feeling of being under a tree's canopy and feeling the light that peaks through the leaves. In the spiritual spaces there is a truss system that resembles tree branches and creates shadows that fill the room.



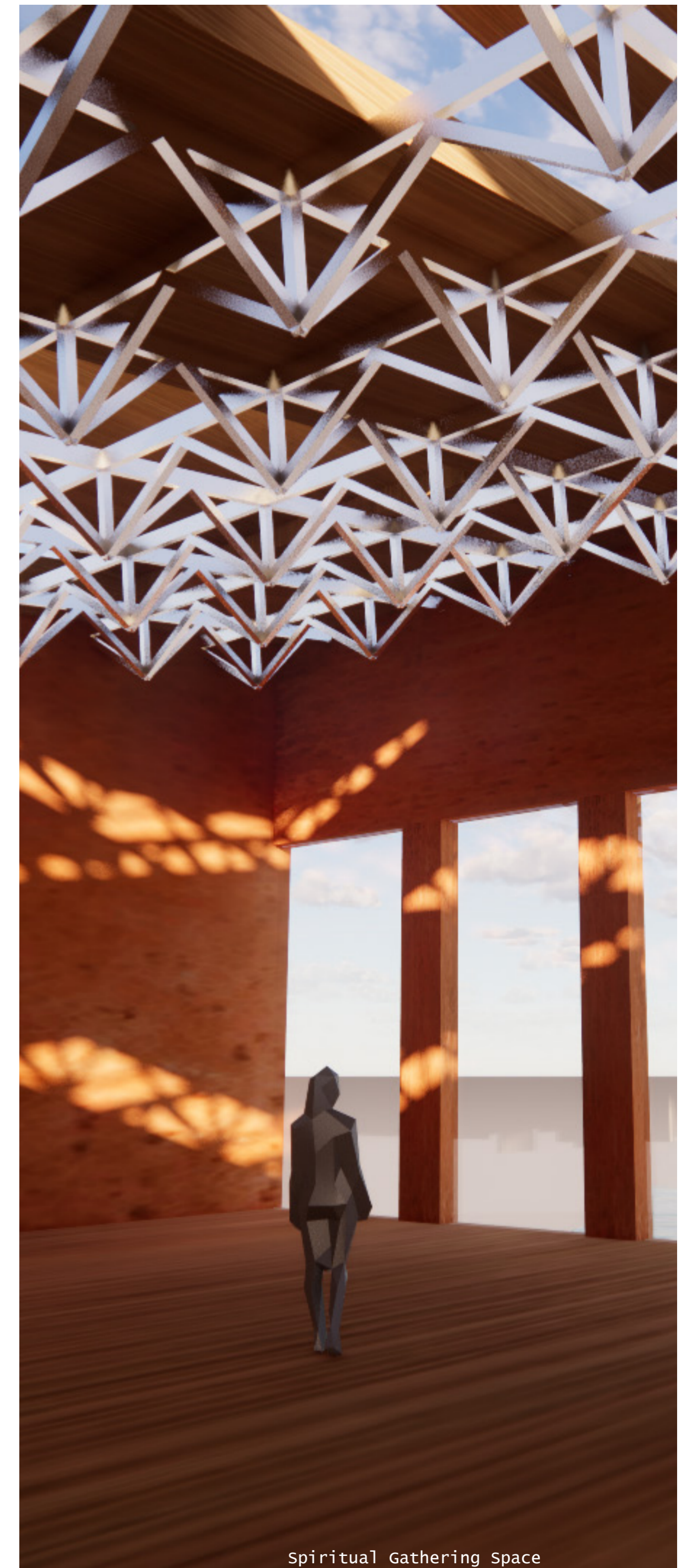
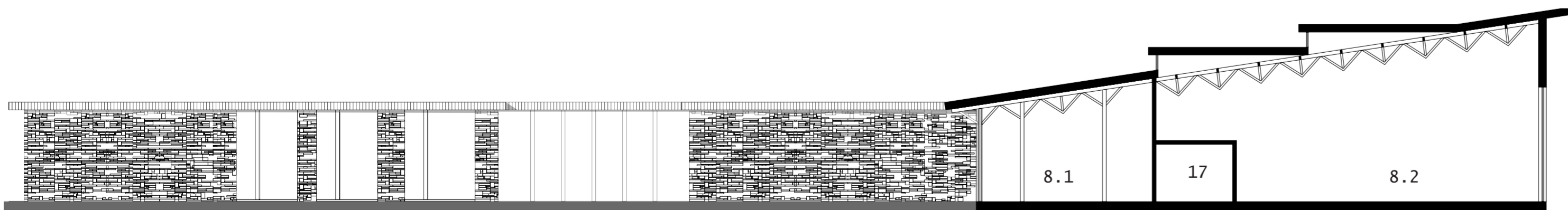
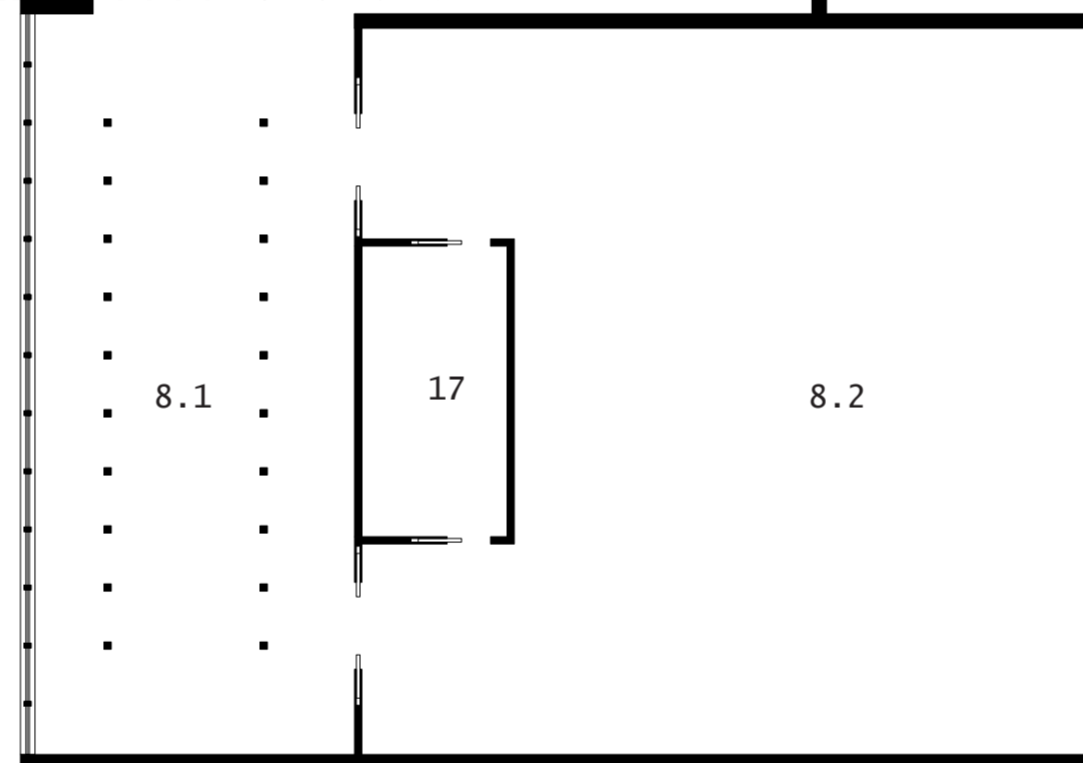
- 1. Lobby
- 2. Chaplain's Office
- 3. Asst. Chaplain's Office
- 4. Support Staff Office
- 5. Campus Ministry Offices
- 6. Small Conference Room
- 7. Large Conference Room
- 8.1. Spiritual Gathering Lobby
- 8.2. Spiritual Gathering Space
- 9. Multipurpose Space
- 10. Chair/Table Storage
- 11. Fellowship Lounge
- 12. Display Case
- 13. Kitchen/Pantry
- 14. Restrooms
- 15. Ablutions Area
- 16. Janitor's Closet
- 17. Mechanical storage

### Spiritual Gathering Lobby

The lobby is filled with columns that resemble tree trunks creating a forest. The columns cast shadows filling the room creating a spiritual atmosphere.

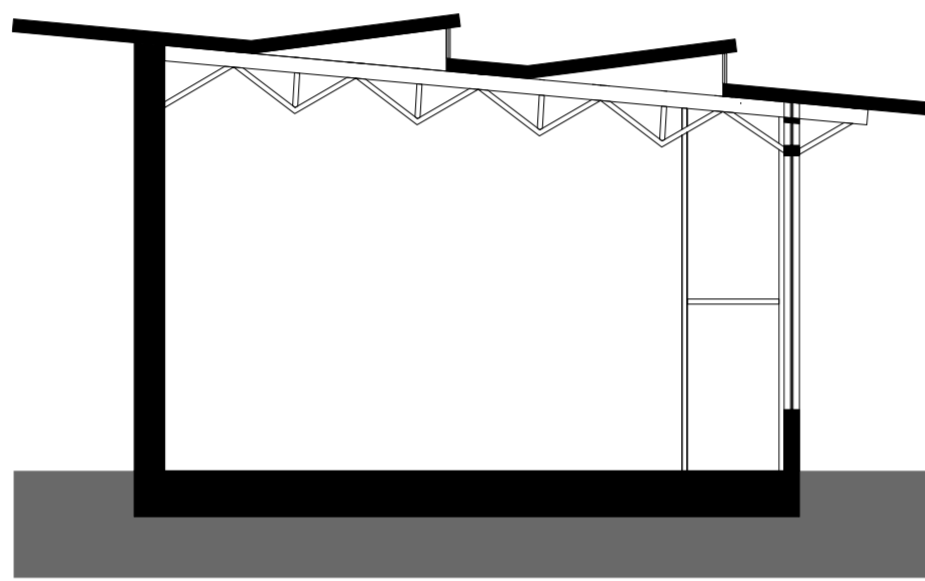
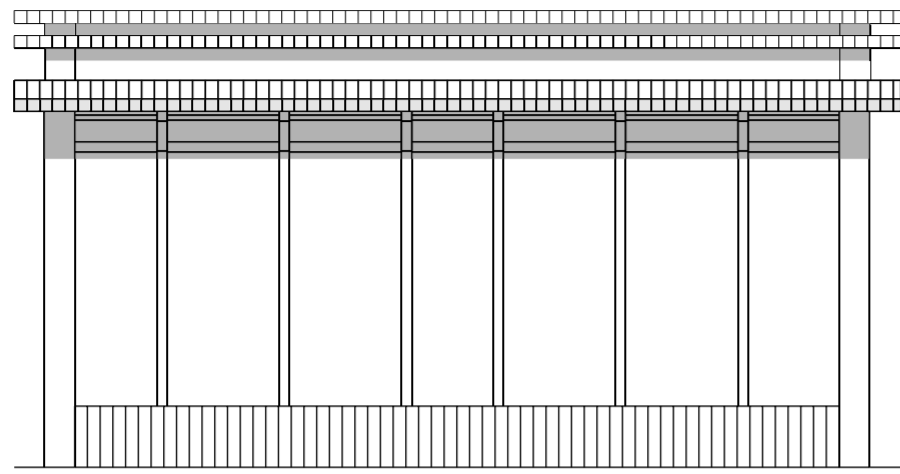
### Spiritual Gathering Space

The spiritual gathering space has opening in the roof to allow light to pour into the space. The truss system creates shadows that fill the space, resembling the light that peaks through a tree's canopy.



Spiritual Gathering Space

Group Meditation Space

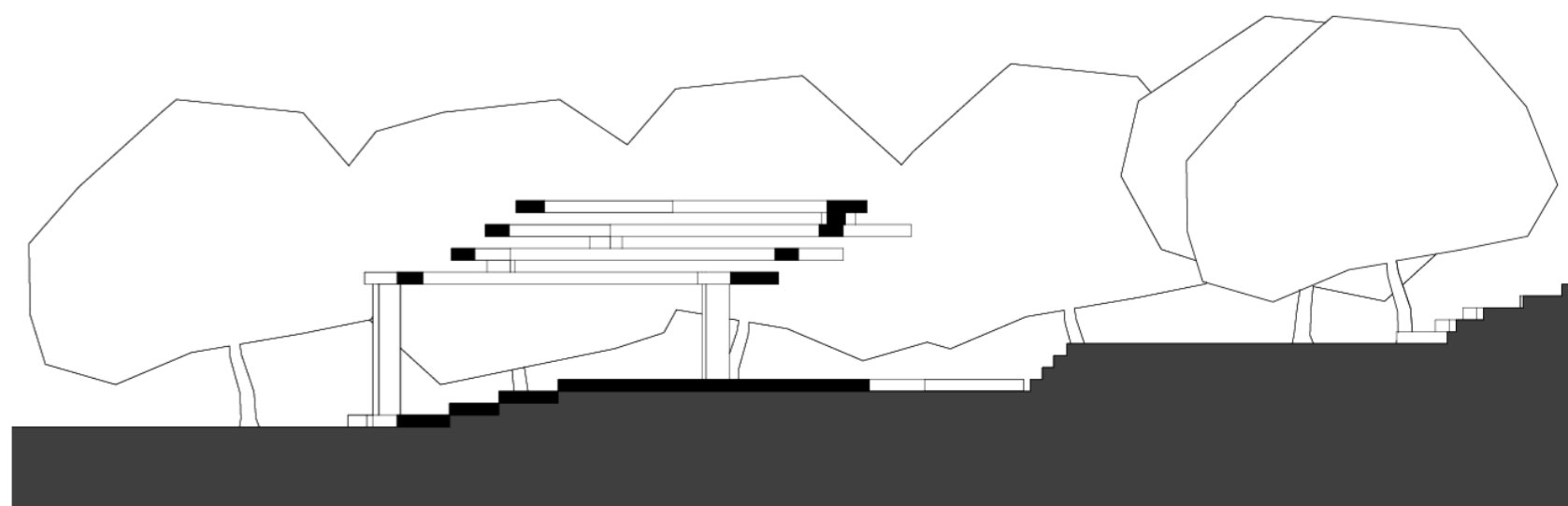
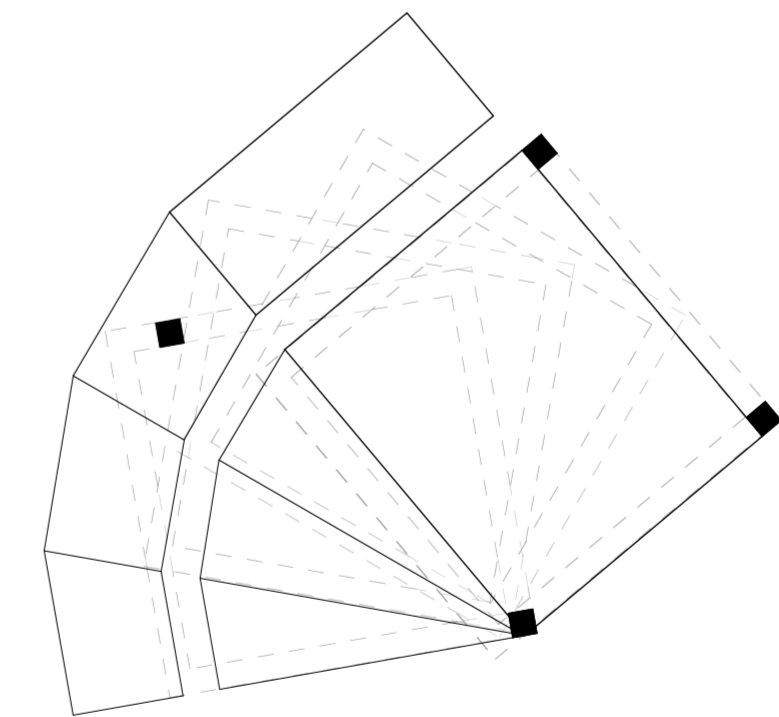
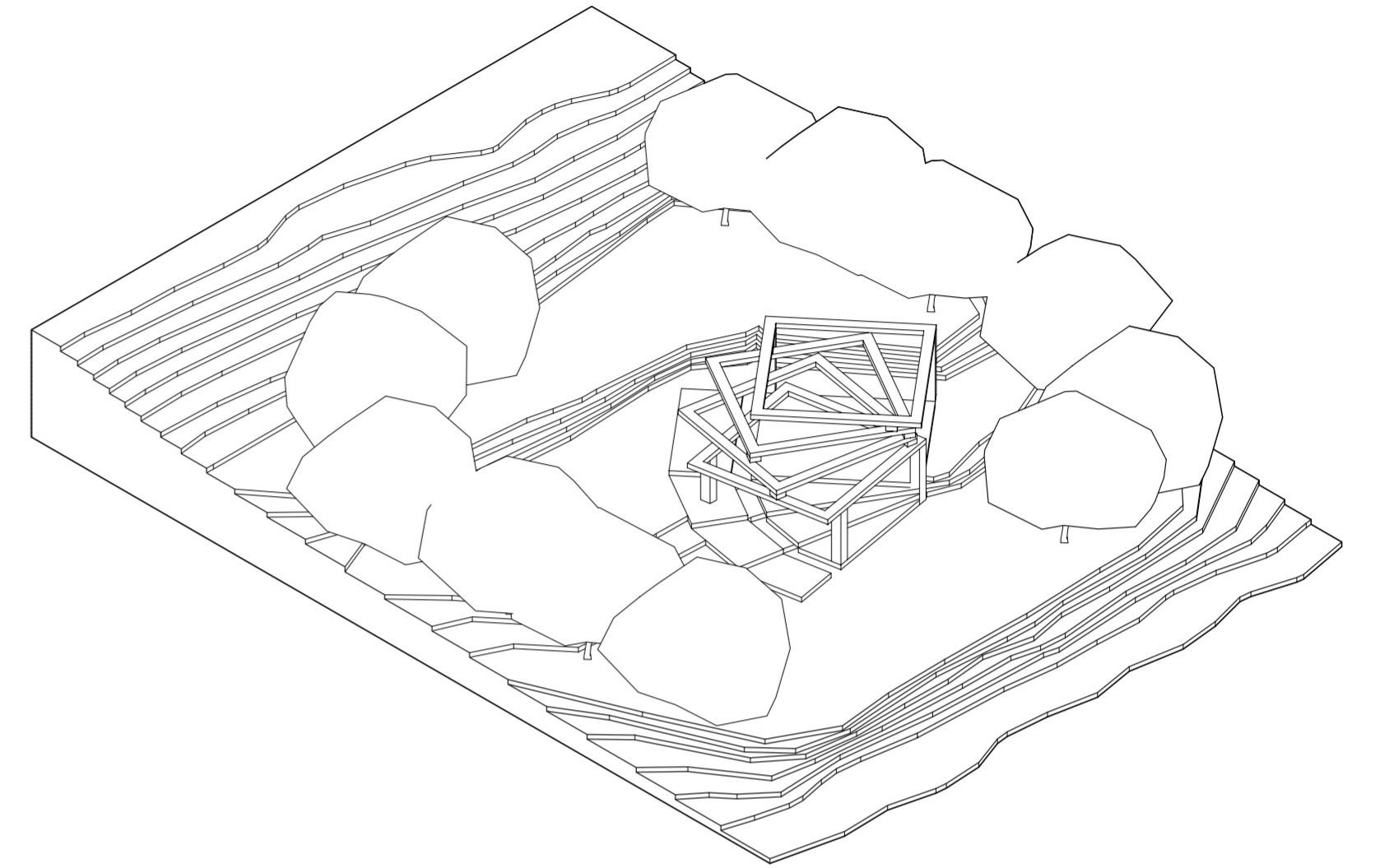


Group Meditation Space Interior

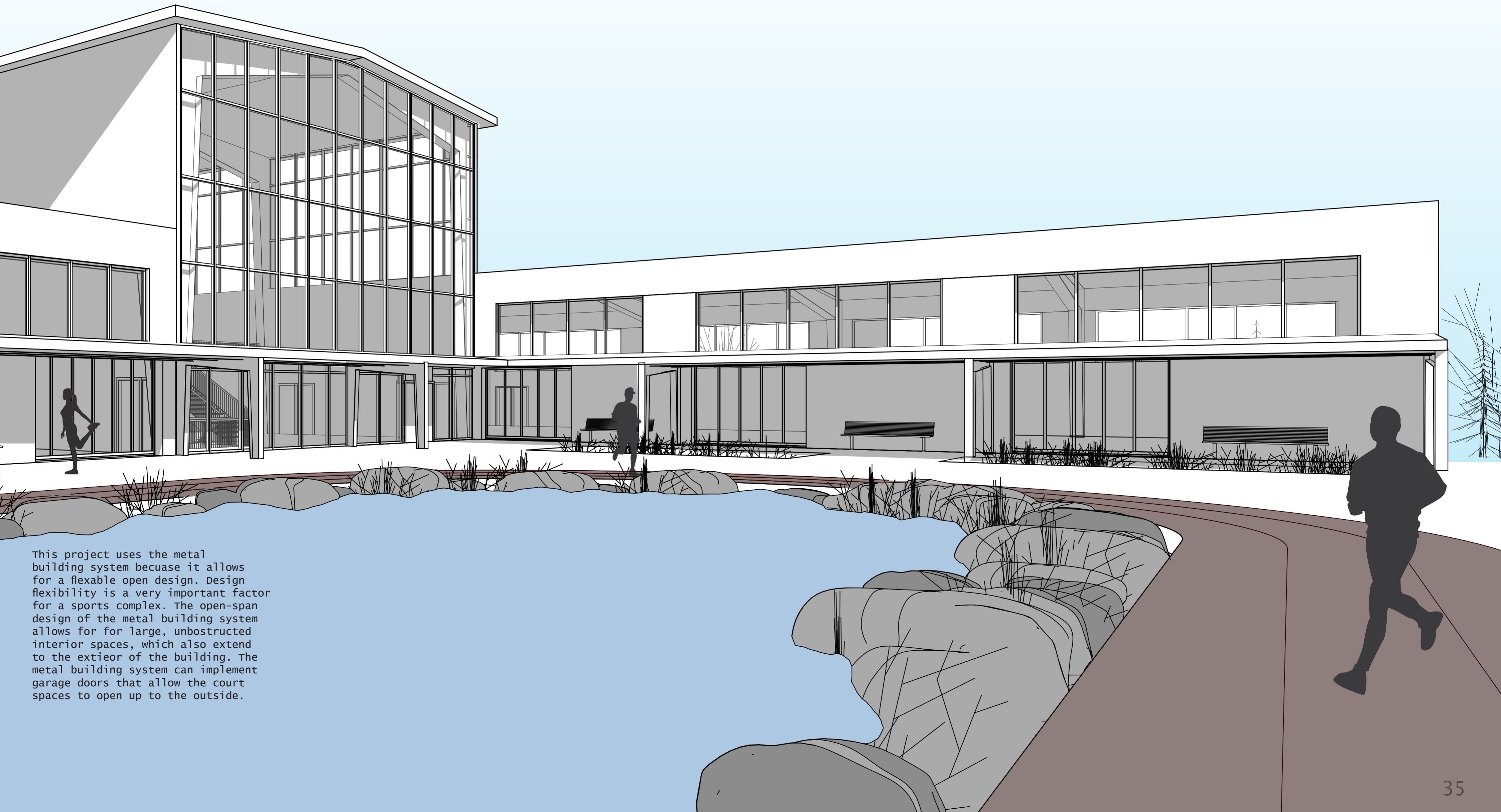
# O-Hill Viewing Platform



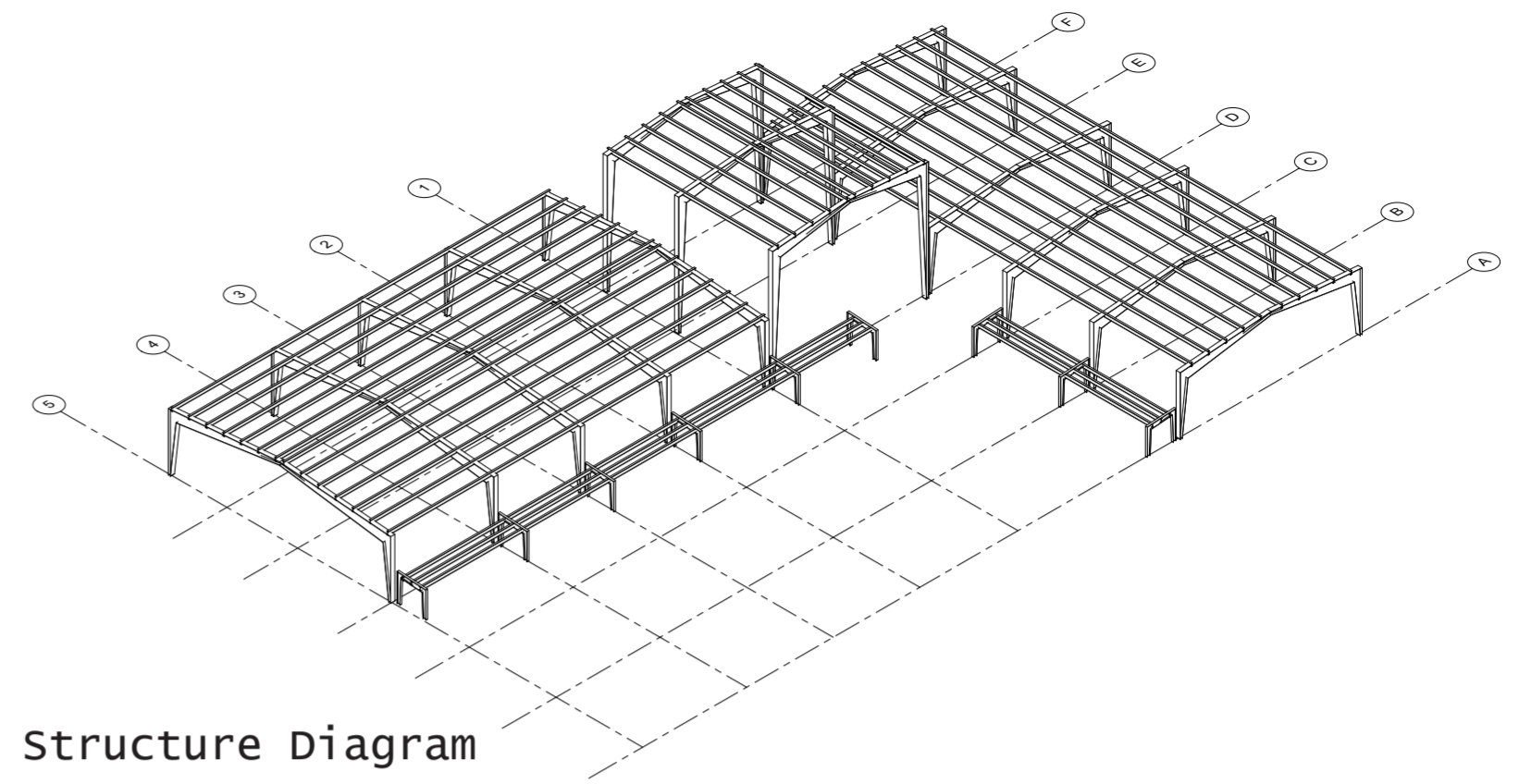
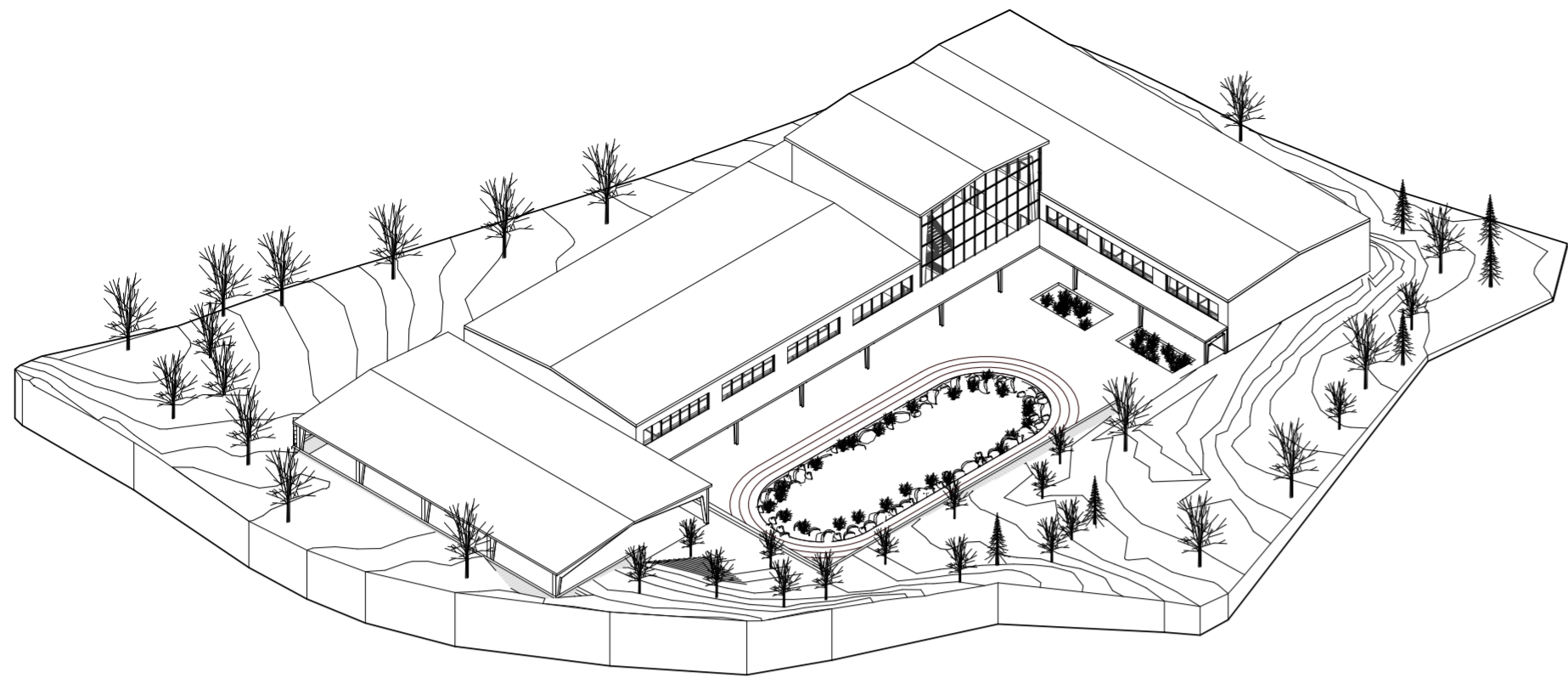
This viewing platform's design was influenced by the surrounding environment. The goal was to blend in and be a part of the landscape. The stepping form of the structure is to better match the slope of the hill that this viewing platform resides on. Surrounding the viewing platform are cherry trees. The trees hearken back to when Ohill located on the Umass campus was once an orchid. The trees are placed in a way to create a framed view looking down the hill.



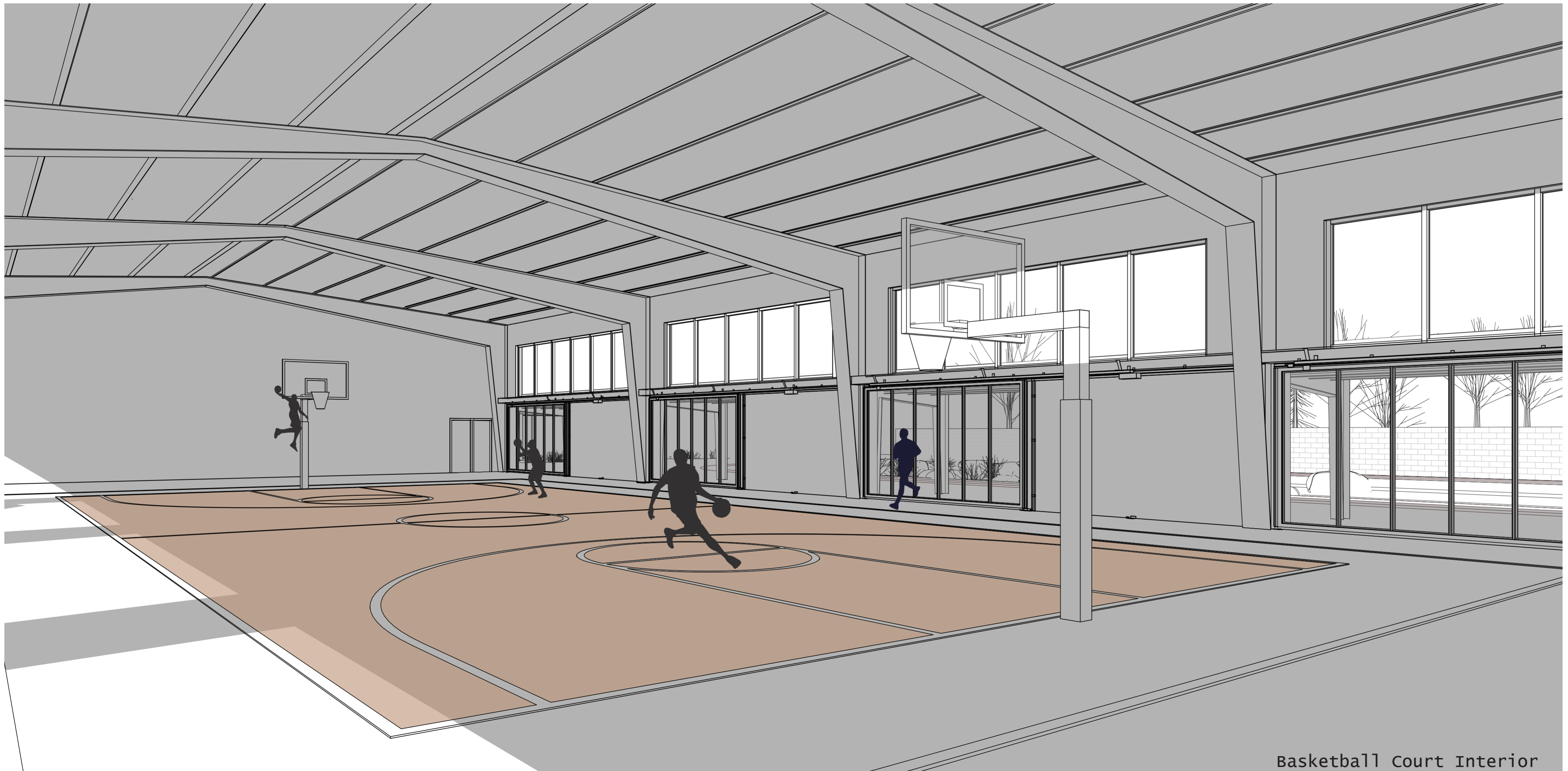
# Metal Building Rec Center

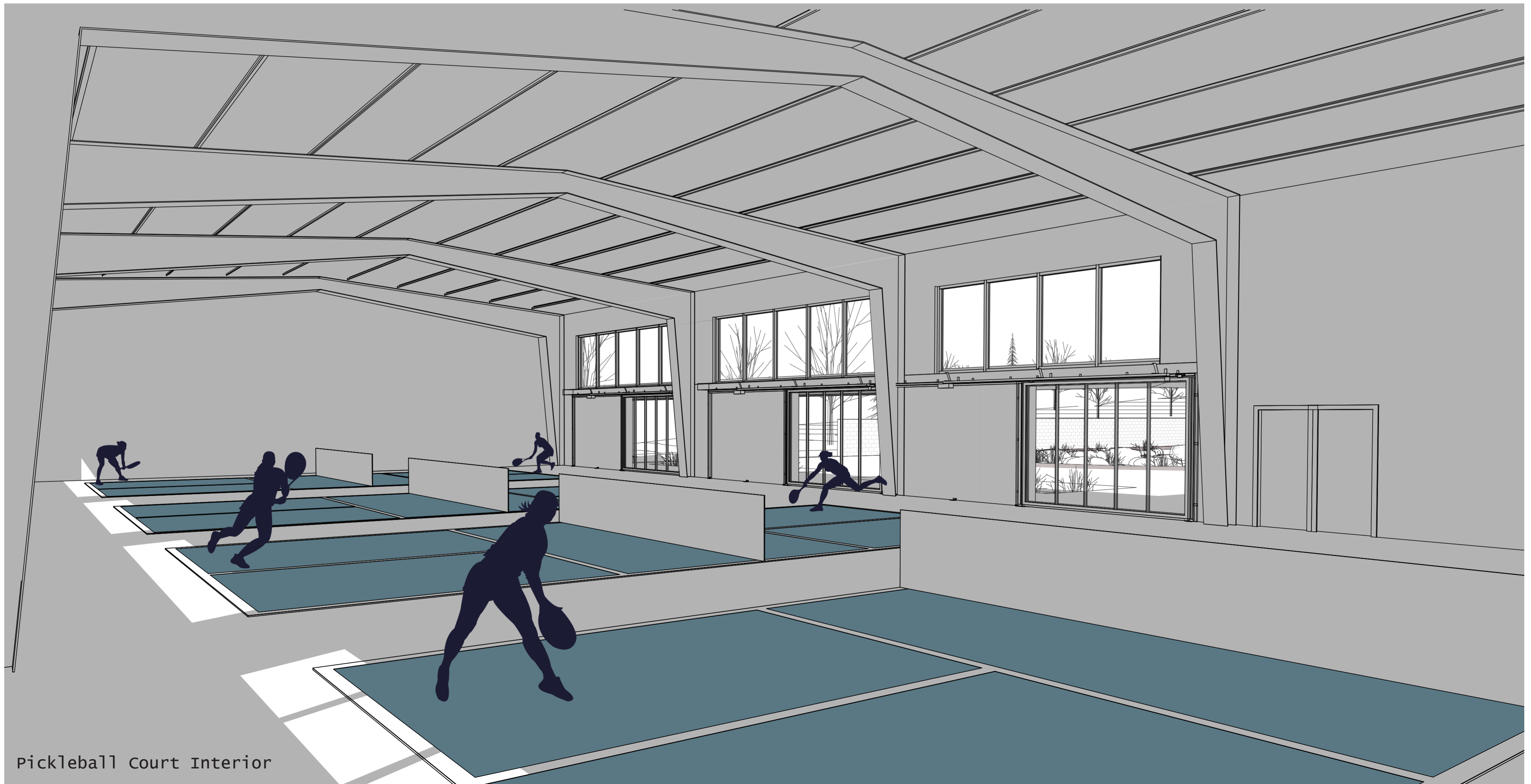
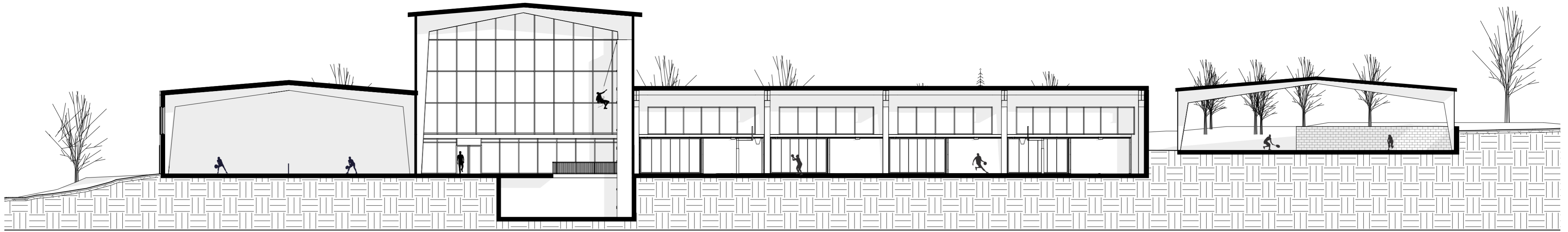


This project uses the metal building system because it allows for a flexible open design. Design flexibility is a very important factor for a sports complex. The open-span design of the metal building system allows for large, unobstructed interior spaces, which also extend to the exterior of the building. The metal building system can implement garage doors that allow the court spaces to open up to the outside.



Structure Diagram





Pickleball Court Interior



